

 DSP TALUMIS

# GEMINI

The Digital Twin for  
your terminal

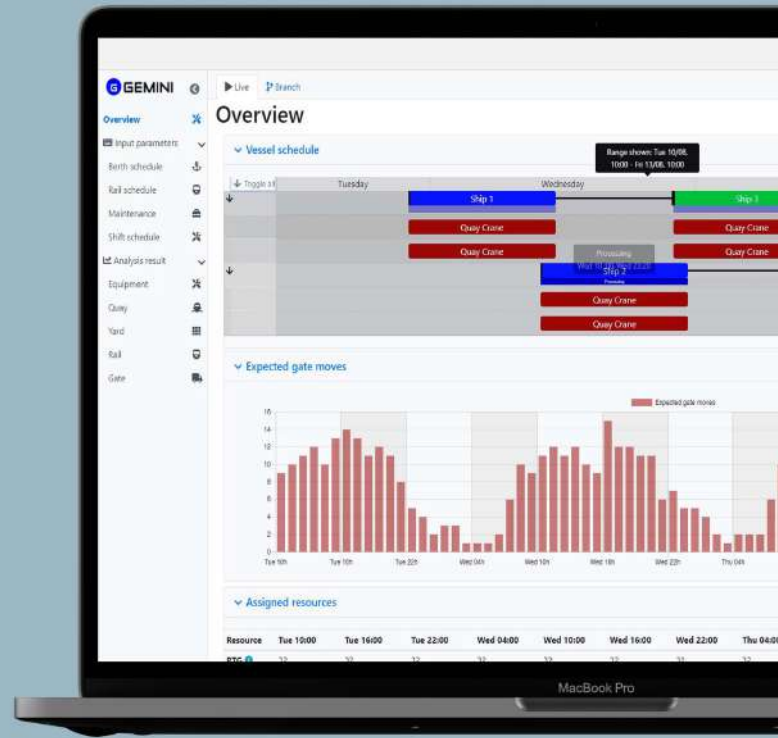
Gemini supports terminal operators  
in their daily operational decisions



# GEMINI

GEMINI is a digital twin capable to mirror decisions and strategies of the Terminal Operating System (TOS) algorithms and to model all other sub-systems' behaviour and workers practice during real operations.

GEMINI is a feature rich product that will drive you in one of the most challenging effort for container terminals: emulate its current process and create what-if scenario in case of innovative solutions.



## Key Features

- **Service**  
Use it when you want
- **Modular**  
Use what you want
- **Real**  
Use your TOS logic
- **Flexible**  
Define, Run and rewind your scenario
- **Professional**  
Operations experience
- **Speed**  
Practical simulation time
- **Economic**  
Priced around you

## Modules



Predictive Analysis



Simulation



Emulation



3D View



Huis ter Heide  
The Netherlands  
contact@dsp.team  
www.dsp.team



**Ask for a demo**  
contact@dsp.team